



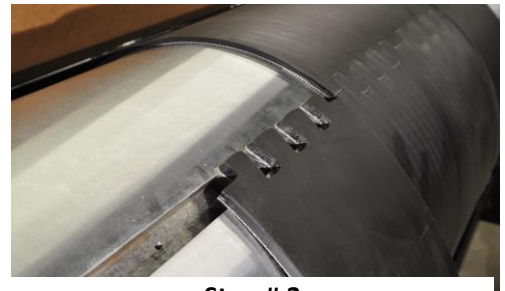
# EZ Lock™ Anvil Cover Installation Instructions

**The EZ Lock™ Anvil Cover attaches to the anvil cylinder by magnetic force.**

- 1. Insert the end of the cover that contains the magnets into the keyway first (this is the end with 3 full width knuckles).**
- 2. Wrap the cover around the cylinder.**
- 3. Insert the second end of the cover into the keyway so that the two sets of knuckles engage each other.**
- 4. Move the cover laterally by tapping it with a mallet, if necessary.**
- 5. Remove the covers as needed by prying below the keyway lock bar with the EZ1000 pry bar or similar tool. To avoid damaging the cover DO NOT attempt to pry under the cover in any other location.**

**Rotate the position of the cover on the cylinder as needed to increase cover life and to improve cutting quality.**

Step # 1



Step # 3



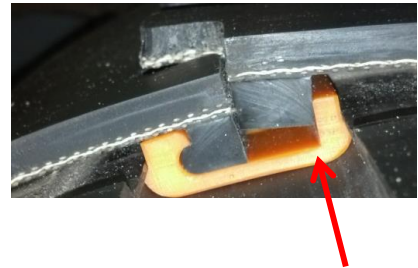
Step # 5





# Installation Instructions for EZ Lock™ Anvil Covers for Boltless Equalizer Systems

1. Insert the end of the cover that has the end with 3 full width knuckles on it the into the keyway first.
2. Wrap the cover around the cylinder.
3. Insert the second end of the cover into the keyway so that the two sets of knuckles engage each other, making sure the straight edge of the lock bar engages the keyway as shown. Then tap the second end of the cover in to the keyway.
4. Move the cover laterally by tapping it with a mallet if necessary.



Rotate the position of the covers on the cylinder as needed to increase cover life and improve cutting quality.